

Marzia Fiume Garelli
portfolio / architecture

Marzia Fiume Garelli

“Analogue Venice”

**Reconstruction of the unbuilt projects of
F.L. Wright, Le Corbusier and L.I. Kahn
in Venice, Italy**

2009

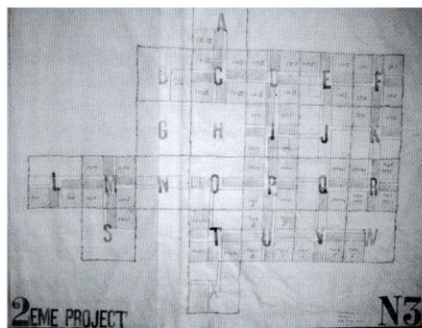
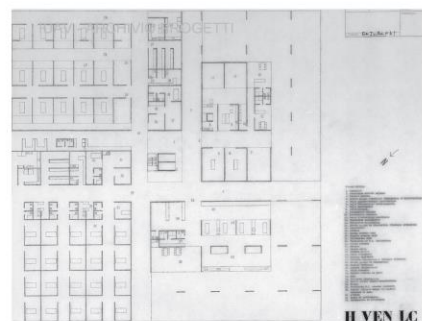
Thesis

supervisor: Prof. L.V. Barbera

second supervisor: I. A. del Monaco

portfolio

architecture / thesis

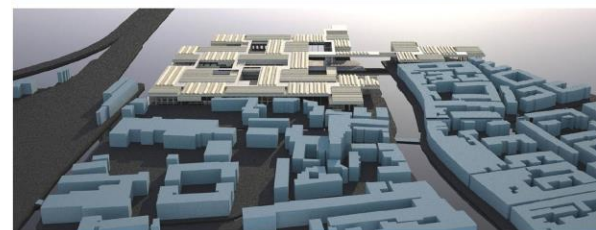
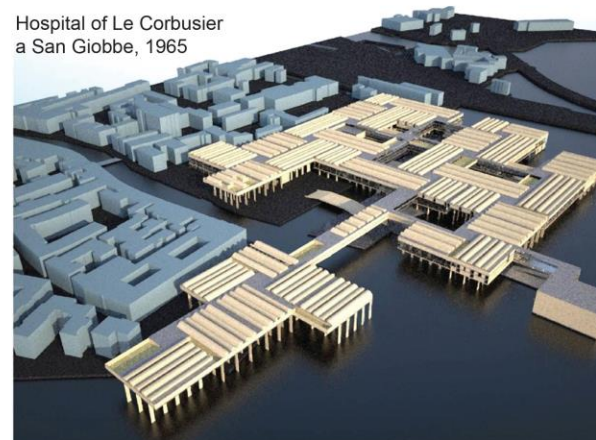


Atelier Le Corbusier, unité de bâtisse
and general plan



Plan and section of the third floor cell
Atelier Le Corbusier

Hospital of Le Corbusier
a San Giobbe, 1965



Marzia Fiume Garelli

"Analogue Venice"

**Reconstruction of the unbuilt projects of
FL Wright, Le Corbusier, LI Kahn in
Venice, Italy**

2009

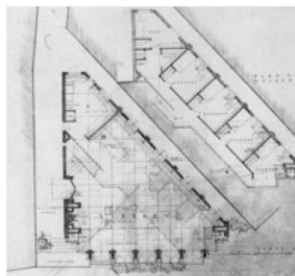
thesis

supervisor: Prof. L.V. Barbera

second supervisor: I. A. Del Monaco

portfolio

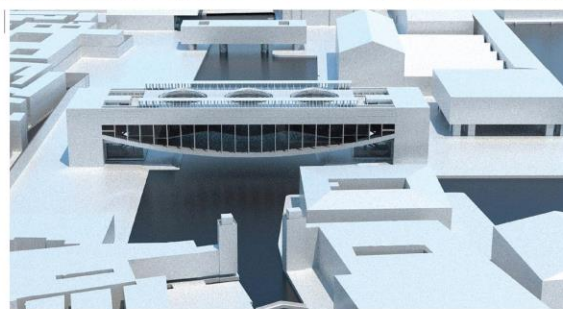
architecture / thesis



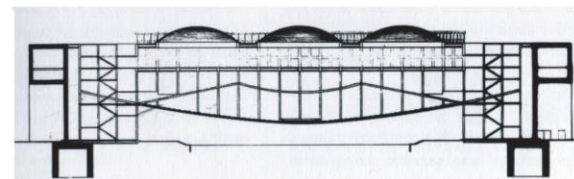
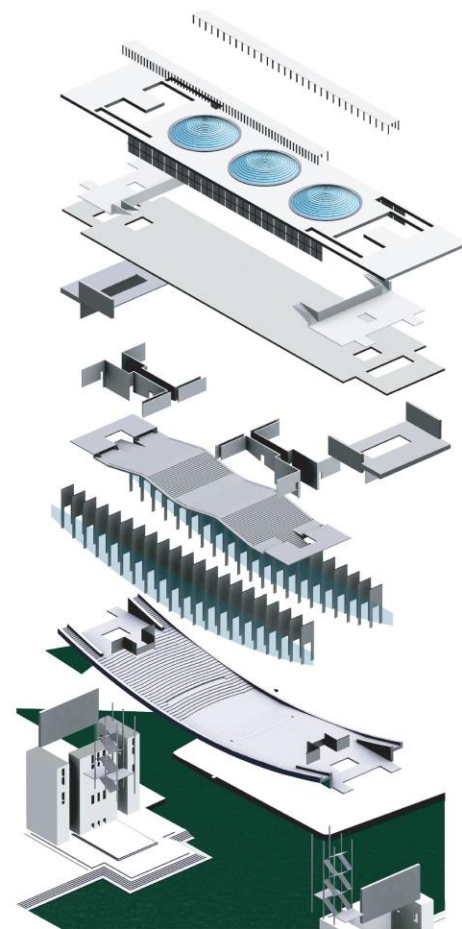
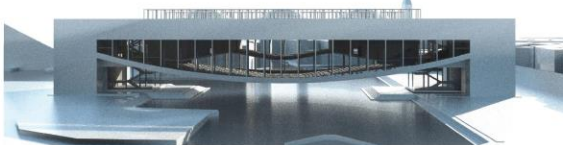
_Frank Lloyd Wright,
ground floor and mezzanine
1953,



Masieri Memorial,
F.L. Wright, 1953



Palazzo dei Congressi,
L.I. Kahn, at the Arsenale, 1972



Palazzo dei Congressi,
L.I. Kahn, section, 1972



Marzia Fiume Garelli

portfolio

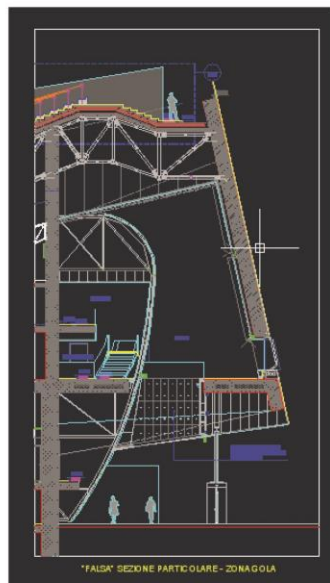
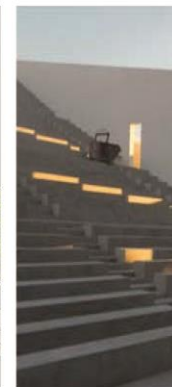
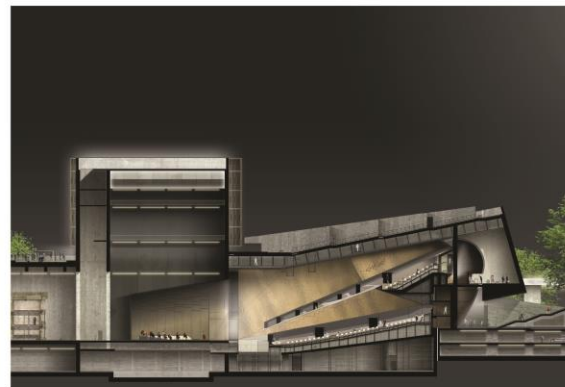
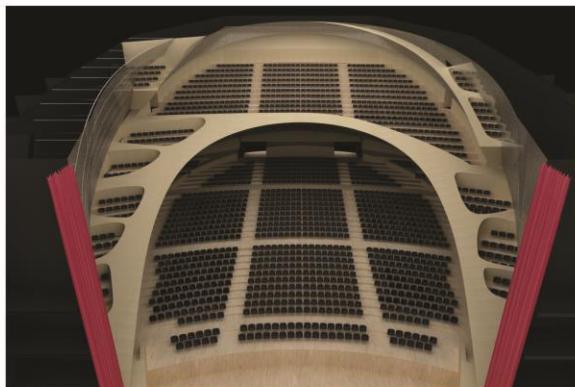
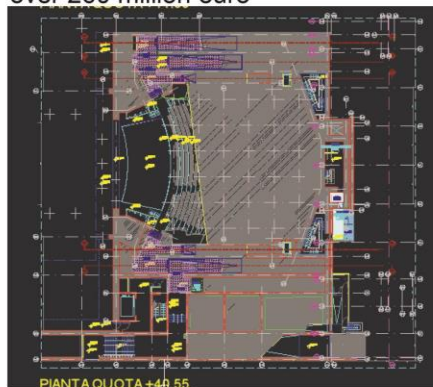
Parkland of music and culture **Florence**

ABDR Associati

2012

1800 seats

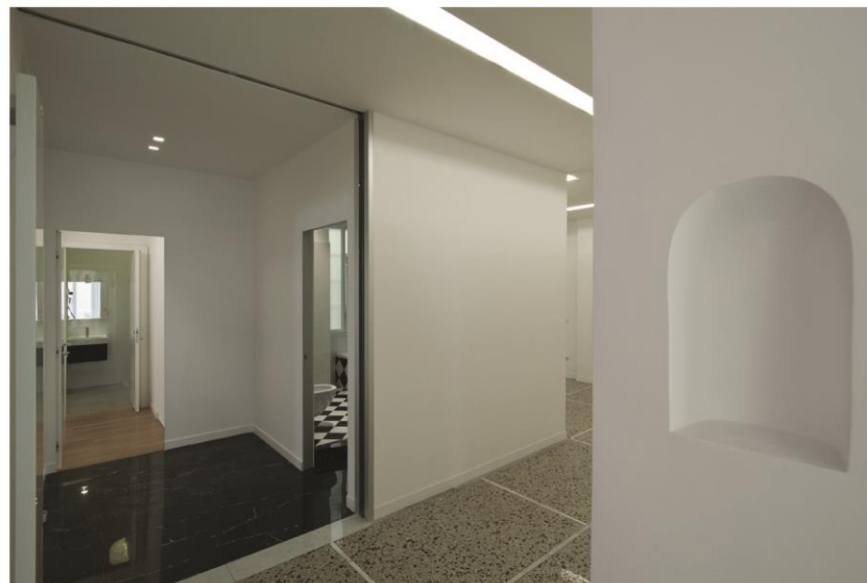
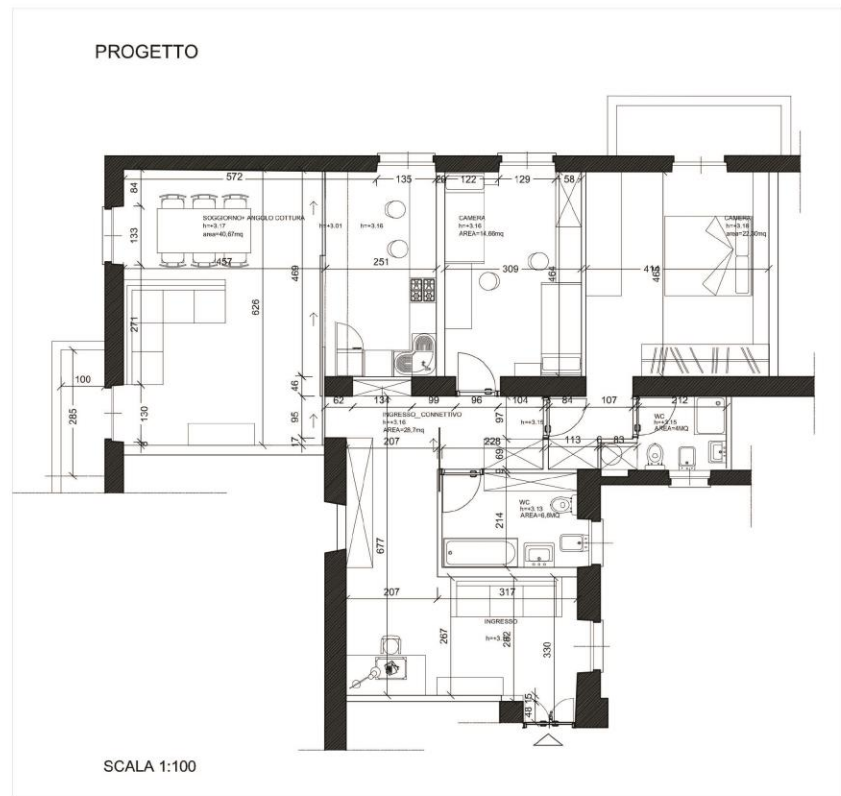
over 260 million euro



Marzia Fiume Garelli

**Renovation of a residential apartment
in Rome, via Lago di Lesina 53, int.11
110sqm
100 000
2012**

portfolio
personal work



Marzia Fiume Garelli

The urban gator 2012

portfolio
personal work

The main goal of the project is to search a possible alternative to fight against the phenomenon of the sea level rise taking into consideration the history and the culture of the place that would be eventually submerged by water.

The project is situated in Cape Canaveral, an easily recognizable cape on the map, home of the Kennedy Space Center and the hub of the nation's human space program. From here, American astronauts conquered the moon.

Considering the fact that the Kennedy Space center and Cape Canaveral Air force station are currently conversion areas and that Port Canaveral is presently the cruise port of Orlando, the area seemed to be a strategic location. The new city will be capable to accommodate more than 200.000 inhabitants and will also function as a land-bridge, that could create a stronger connection with the city of Orlando and that could link the railway, the interstate network, the secondary waterway, the intercostal waterway and the ocean.

The initial idea was to design a parallel landscape that could dialogue with the land underneath. An alligator, a typically Floridian animal that can live in wetlands, between land and water, inspired the form ideally. "The parallel land" incorporates enormous holes that allow the land underneath to get natural sun. Moreover these holes will remain as witnesses of the land eventually submerged by water. "The urban gator" grows from the mainland, climbs over the waterway and strips of land and finally mingles with the ocean.

The project is a mechanism composed by three main levels:

-The city is situated on the top, in the third level.

The American grid inspires the Plan of the urban agglomerations.

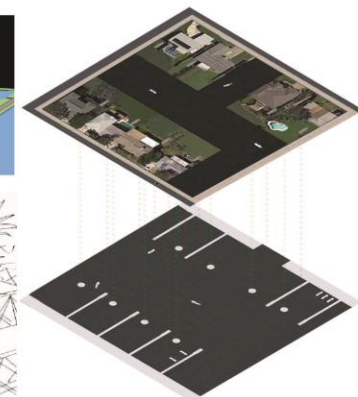
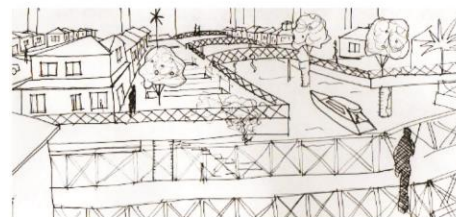
The level is linked to the original land by roads, ramps and elevators.

The main streets will be only accessible by pedestrians and cyclists.

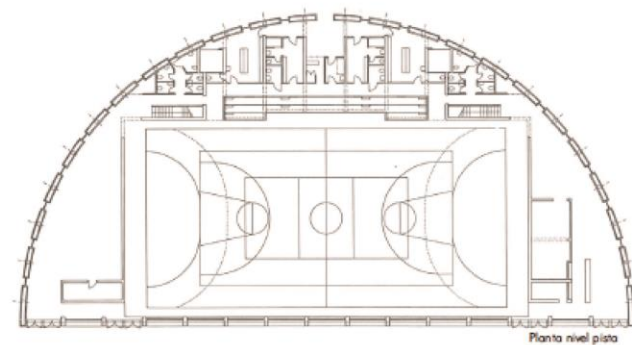
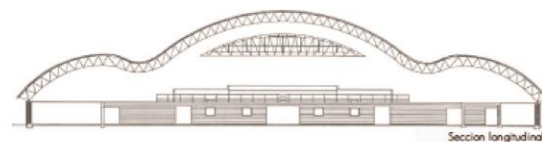
The city is composed by different centers with an own downtown, recognizable by the presence of skyscrapers.

-The intermediate level will lodge all the facilities, the parking, the public transport, and the transport of goods...

-The first level will accommodate all the activities that will be linked to the water and to the original land. From this plan elevators will depart to reach the city.



portfolio
project realized (1996) renovation



Marzia Fiume Garelli

GEM - Grand Museum of Egypt, Cairo (Project of Heneghan Peng)

Exhibition design

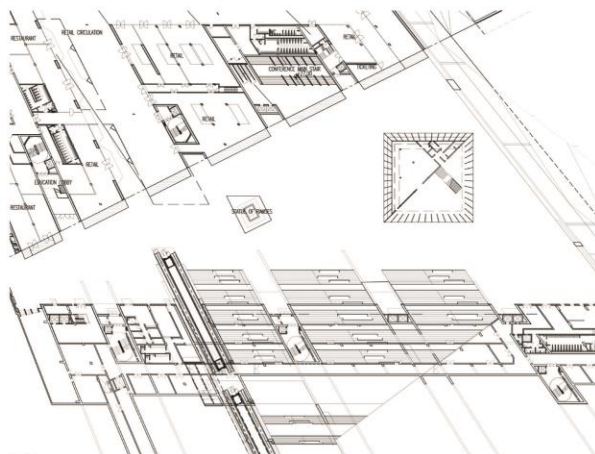
Arata Isozaki

2013-2014

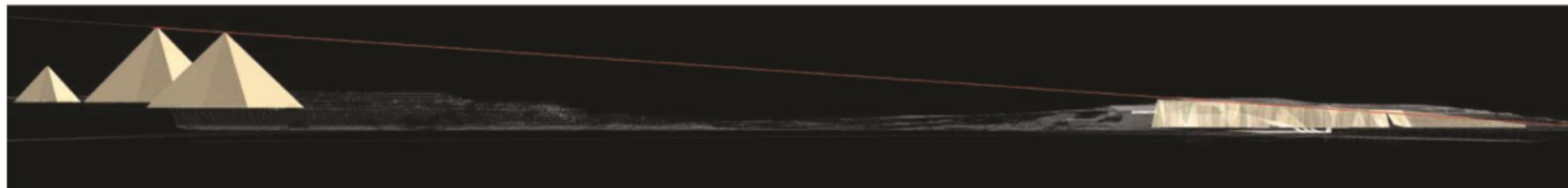
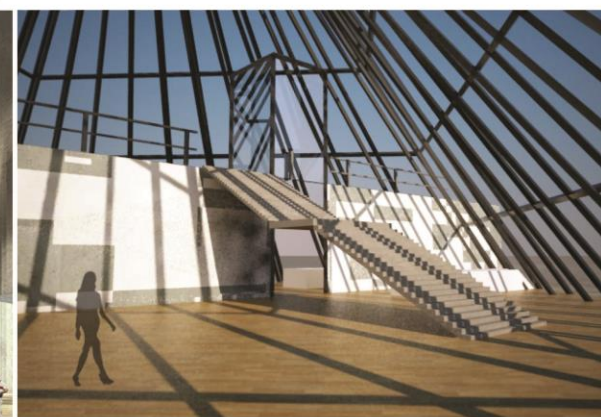
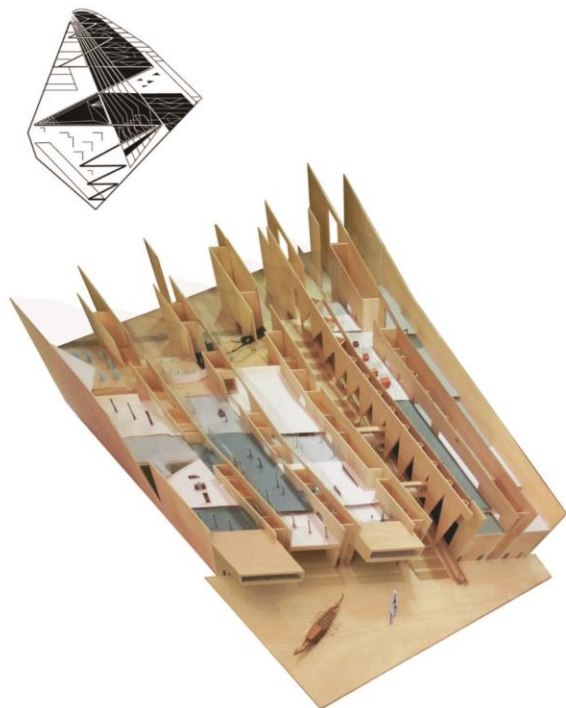
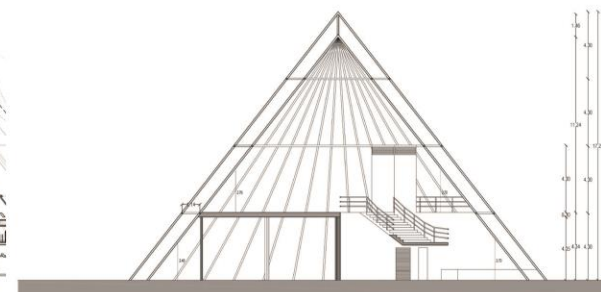
7 million USD

portfolio

project partially realized



The Grand Egyptian Museum holds in trust for Egypt and the World a chronological statement for the ancient history of Egypt over the past 7000 years. Neighboring a timeless wonder, the Giza Pyramids, the new museum is to pay homage to eternal Ancient Egyptian monuments, treasures, and history hosting over 100,000 artifacts, about 3500 of which belong to the famous King Tutankhamen.

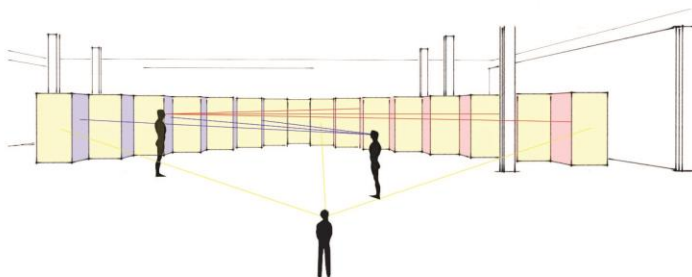
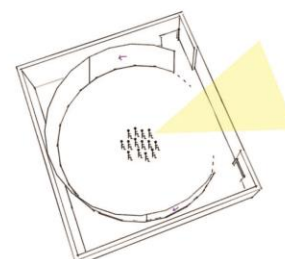
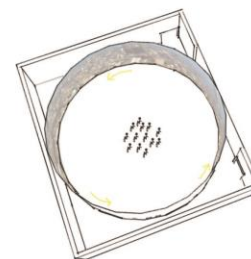
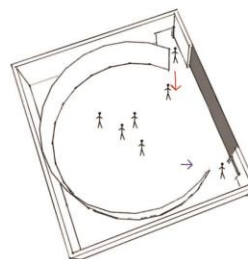


Museum Facade is constructed within the line linking the site to the pyramids

Marzia Fiume Garelli

portfolio

Museum of Catalan Modernism & of Gaudí
Arata Isozaki & Asociados
Initial Ideas
2012



Marzia Fiume Garelli

**Renovation of a residential apartment
in Rome, via Dardanelli 13**

90sqm

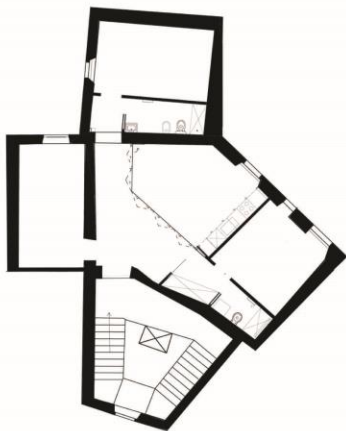
100 000 Euro

2015

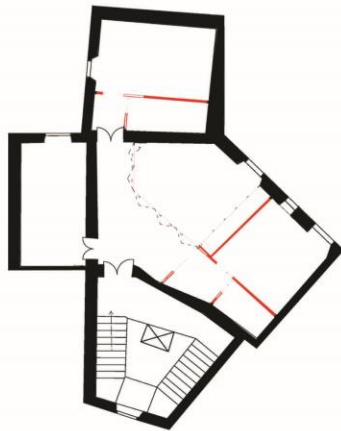
portfolio
personal work

9

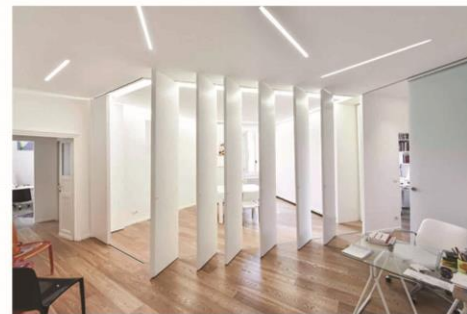
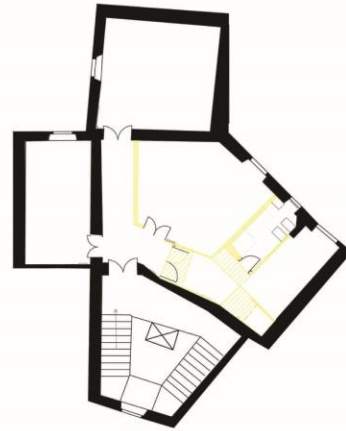
Project



Construction



Demolition



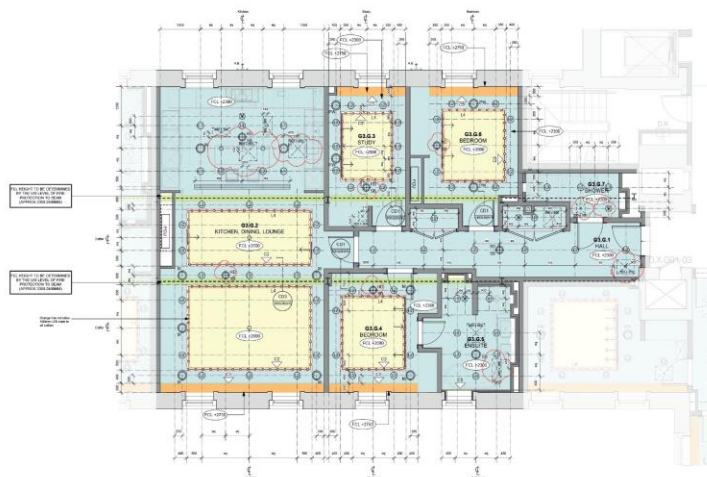
Marzia Fiume Garelli

PDP London
Renovation of the Royal Star & Garter Home
2015

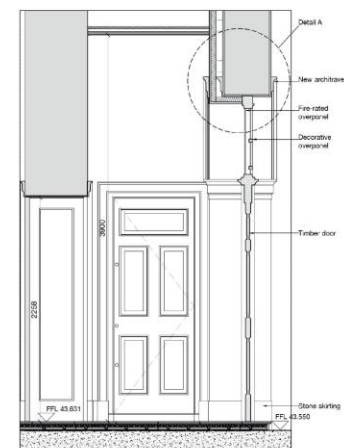
Grade II listed building
80 million pound



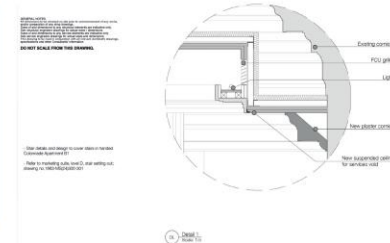
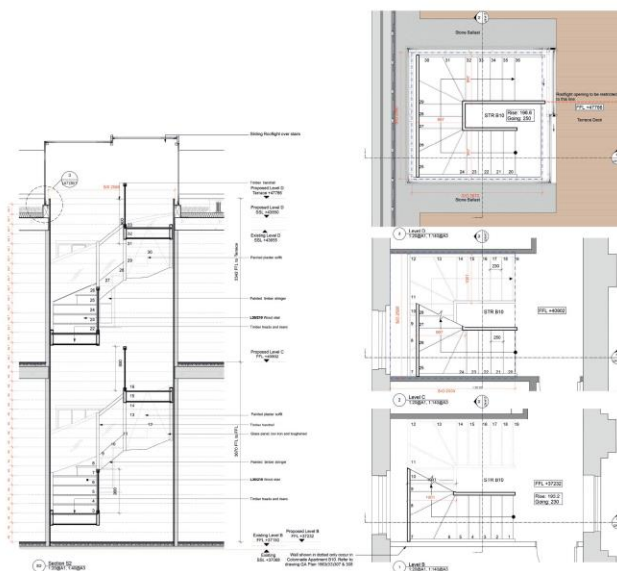
portfolio
project renovation



1 Apartment G3.G Reflected Ceiling Plan
Scale: 1/50



 Elevation
Scale: 1:20 @ A1, 1:40 @ A3



C2 Search for information 08.01.08 07
C1 Search for information 03.02.08 06
C1 Search for information 08.01.08 06
C2 Search for information 08.01.08 06

1063 20417 **C2**

Conts	Star in Space	1063	03.02.08
	Customized Apartments W&B		08.01.08
	Plans and Section (2)	1063	08
Conts	Star in Space	1063	
	Photograph		08.01.08
Conts	London Square	1063	

paul davis + partners
architects urban designers

Marzia Fiume Garelli
Paintings

portfolio
personal work

